



2020-2021 Influenza Season Surveillance Report

Everyone 6 months and older should get a flu vaccine

Summary (Week 51: December 13, 2020 – December 19, 2020)

Current influenza activity is **LOW** in the Peoria Region, with OSF Saint Francis Medical Center, UnityPoint Health Methodist | Proctor, and Pekin reporting 6 positive influenza tests.

Peoria Region Trend

Week	Health Care Providers: SFMC, UP-M/P, HMC, Pekin					Comment
	Positive Tests	Number of Tests	Percentage Positive	Admission	ICU Admission	
Week 44*	4	282	1.4%	0	0	Subtype A & B
Week 45*	0	365	0.0%	0	0	
Week 46*	1	400	0.3%	0	0	Subtype B only
Week 47*	0	453	0.0%	0	0	
Week 48*	0	443	0.0%	0	0	
Week 49*	8	525	1.5%	0	0	Subtype A & B
Week 50*	7	605	1.1%	0	0	Subtype A & B
Week 51*	6	563	1.1%	1	0	Subtype A & B
Total	26	3,636	0.72%	1	0	

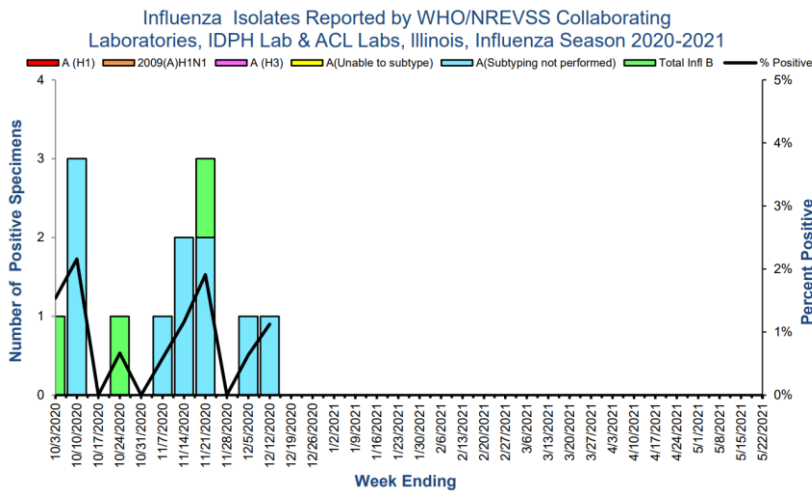
*Reporting from only specified sources (Week 44, 45, 46, 47, 48, 49, 50, 51 = No Hopedale Info)

Reporting to Peoria City County Health Department:

- 0 influenza cases requiring ICU hospitalization in the past 30 days

State and National Trends

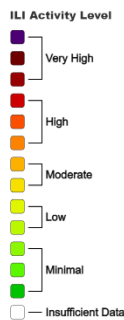
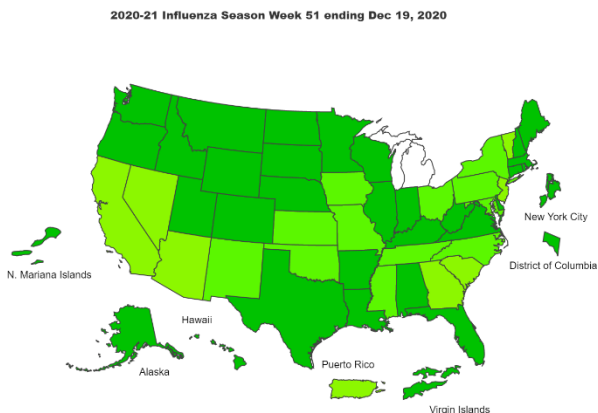
State Trends



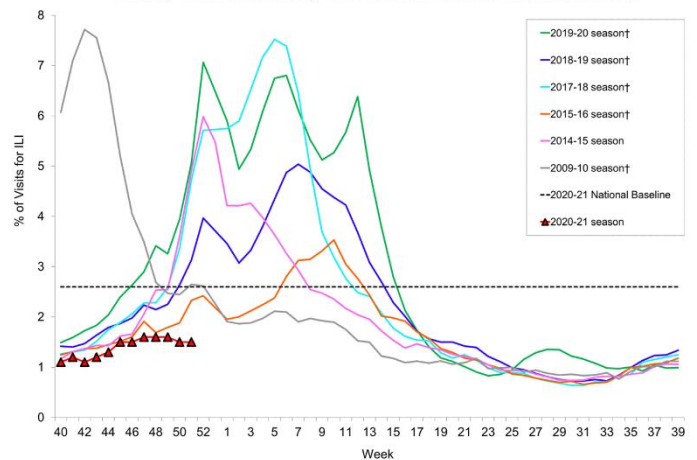
- For week 51 there were 0 influenza specimens tested by WHO/NREVSS collaborating Illinois laboratories and IDPH Laboratories; 0 specimens tested positive for Influenza: **0.0% positive**
- **Zero (0) influenza-associated Intensive Care Unit (ICU) admissions** were reported in Illinois for this reporting week.
- For this reporting week, **zero (0) influenza outbreaks** were reported in Illinois.

National Trends

The proportion of outpatient visits within Illinois for influenza-like illness (ILI) was 0.91% which is **BELOW** the national region 5 baseline of 1.9%.



Percentage of Visits for Influenza-like Illness (ILI) Reported by the U.S. Outpatient Influenza-like Illness Surveillance Network (ILINet), Weekly National Summary, 2020-2021 and Selected Previous Seasons



Resources

- Centers for Disease Control and Prevention Influenza Website: <http://www.cdc.gov/flu/>
- IDPH Seasonal Influenza Website: <http://www.dph.illinois.gov/topics-services/diseases-and-conditions/influenza/surveillance>