



# Peoria County COVID-19 Surveillance Report

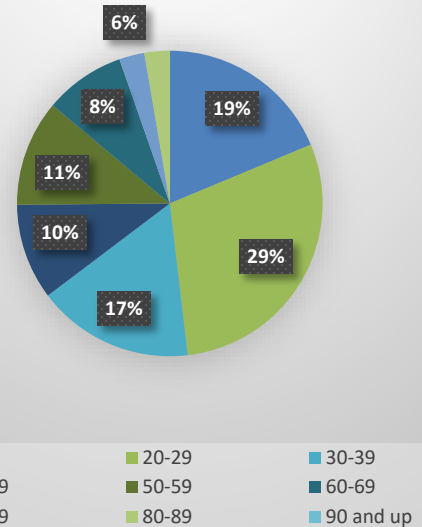
## Week 29: July 18, 2020 – July 24, 2020

CDC Week	Peoria County					Comments
	Positive Tests	Number of Tests	Percentage Positive	Hospital Admission	Deaths	
Week 10	1	5	20%	0	0	March 7 – 13
Week 11	5	32	16%	0	0	
Week 12	1	27	4%	1	0	
Week 13	6	73	8%	4	0	McLean County test site opens
Week 14	17	142	12%	3	1	
Week 15	10	150	7%	5	1	
Week 16	26	722	4%	9	0	HHS Peoria test sites open
Week 17	38	1,174	3%	8	1	
Week 18	36	1,439	3%	5	3	
Week 19	24	1,940	1.2%	3	0	
Week 20	15	1,298	1.7%	3	0	
Week 21	50	1,897	2.7%	9	2	
Week 22	66	1,680	3.9%	20	3	
Week 23	80	2,067	3.8%	8	8	
Week 24	39	2,217	1.8%	5	4	
Week 25	67	2,541	2.6%	5	4	
Week 26	73	2,716	2.7%	7	1	
Week 27	129	3,217	4.0%	7	1	
Week 28	149	3,696	4.0%	8	1	
Week 29	187	4,024	4.6%	10	1	
<b>TOTAL</b>	<b>1,019</b>	<b>31,057</b>	<b>3.3%</b>	<b>120</b>	<b>31</b>	

### Gender



### Age



### Race and Ethnicity

	Week 29		Total	
	Count	Rate per 100,000 population	Count	Rate per 100,000 population
White	103	75.0	487	354.5
Black	63	193.7	277	851.5
Asian	3	38.2	15	191.2
Hispanic/Latino	10	140.9	216	3042.7

## State and National Trends

### State Trends

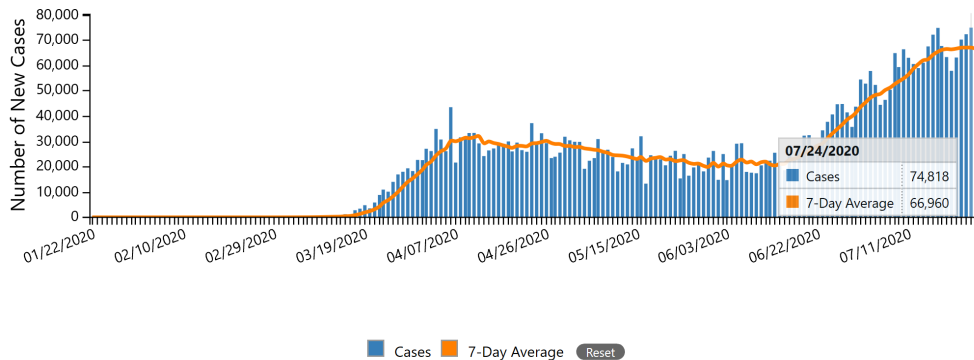
	Positive Tests	Number of Tests	Percent Positive	Deaths
Week 10	46	444	10.4%	1
Week 11	539	3,842	14.0%	4
Week 12	2,441	17,256	14.1%	29
Week 13	5,878	26,506	22.2%	176
Week 14	8,983	39,479	22.8%	386
Week 15	9,688	42,636	22.7%	538
Week 16	12,083	59,469	20.3%	661
Week 17	16,397	95,056	17.2%	662
Week 18	17,705	115,026	15.4%	784
Week 19	16,609	138,888	12.0%	817
Week 20	31,684	297,419	10.7%	1,474
Week 21	12,011	154,629	7.8%	555
Week 22	8,460	149,157	5.7%	522
Week 23	5,283	146,182	3.6%	468
Week 24	4,272	163,902	2.6%	320
Week 25	4,821	179,949	2.7%	267
Week 26	5,459	209,683	2.6%	157
Week 27	6,017	211,108	2.9%	140
Week 28	7,567	254,556	3.0%	128
Week 29	9,123	266,224	3.4%	113
<b>TOTAL</b>	<b>168,457</b>	<b>2,432,523</b>	<b>6.9%</b>	<b>7,385</b>

- **For week 29** there were **266,224** specimens tested by WHO/NREVSS collaborating Illinois laboratories and IDPH Laboratories; **9,123** specimens tested positive for COVID-19: **3.4% positives**.
- **113** deaths were reported in Illinois for this reporting week.

### National Trends

#### New Cases by Day

The following chart shows the number of new COVID-19 cases reported each day in the U.S. since the beginning of the outbreak. Hover over the bars to see the number of new cases by day.



The 7-Day moving average of new cases (current day + 6 preceding days / 7) was calculated to smooth expected variations in daily counts.

### Resources

- Centers for Disease Control and Prevention Website: <https://www.cdc.gov/coronavirus/2019-ncov/cases-updates/cases-in-us.html>
- IDPH Website: <https://www.dph.illinois.gov/covid19/covid19-statistics>