



2019-2020 Influenza Season Surveillance Report

Everyone 6 months and older should get a flu vaccine

Summary (Week 12: March 15, 2020 – March 21, 2020)

Current influenza activity is **High** in the Peoria Region, with OSF Saint Francis Medical Center, UnityPoint Health Methodist|Proctor, and Pekin reporting 140 positive influenza tests.

The Illinois Department of Public Health reported state-wide flu activity as **Widespread** (% of visits for ILI is above the national and region-specific baseline).

Peoria Region Trend

Week	Health Care Providers: SFMC, UP-M/P, HMC, Pekin					Comment
	Positive Tests	Number of Tests	Percentage Positive	Admission	ICU Admission	
Week 44*	6	315	1.90%	0	0	Subtype A & B
Week 45*	6	407	1.47%	0	0	Subtype A & B
Week 46*	4	375	1.06%	0	0	Subtype A & B
Week 47	9	422	2.13%	1	0	Subtype A & B
Week 48	8	392	2.04%	1	0	Subtype A & B
Week 49*	14	489	2.86%	2	1	Subtype A & B
Week 50	29	539	5.38%	3	0	Subtype A & B
Week 51	44	642	6.85%	6	0	Subtype A & B
Week 52*	123	794	15.50%	13	1	Subtype A & B
Week 1	133	907	14.66%	21	5	Subtype A & B
Week 2	150	968	15.50%	23	5	Subtype A & B
Week 3	290	1,158	25.04%	23	6	Subtype A & B
Week 4	404	1,346	30.01%	25	6	Subtype A & B
Week 5*	469	1,711	27.41%	32	8	Subtype A & B
Week 6*	765	1,940	39.43%	34	11	Subtype A & B
Week 7	749	1,863	40.20%	51	6	Subtype A & B
Week 8	635	1,741	36.47%	49	11	Subtype A & B
Week 9*	538	1,600	33.6%	52	7	Subtype A & B
Week 10*	457	1,514	30.18%	37	2	Subtype A & B
Week 11*	374	1,535	24.36%	35	8	Subtype A & B
Week 12*	140	1,074	13%	26	6	Subtype A & B
	5,347	21,732	24.6%	434	83	

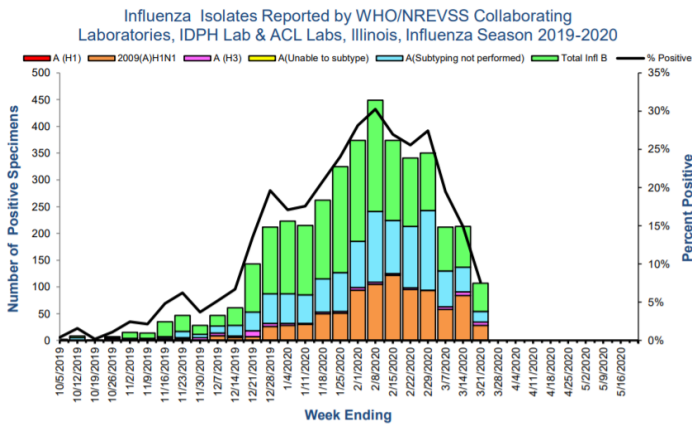
*Reporting from only specified sources (Week 44, 45, 46, 49, 52, 5, 6, 9, 10, 11, 12 = No Hopedale Info)

Reporting to Peoria City County Health Department:

- 26 influenza cases requiring ICU hospitalization in the past 30 days

State and National Trends

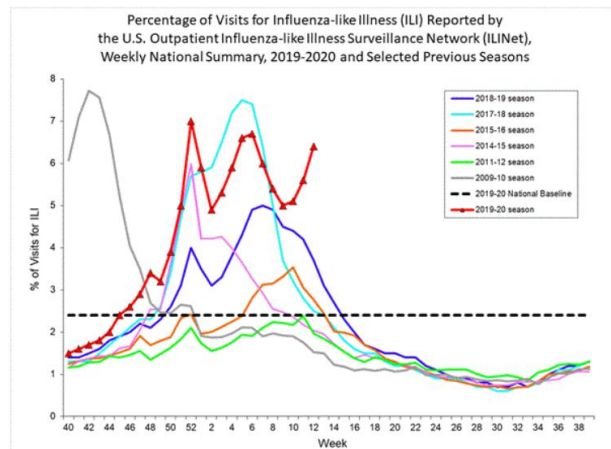
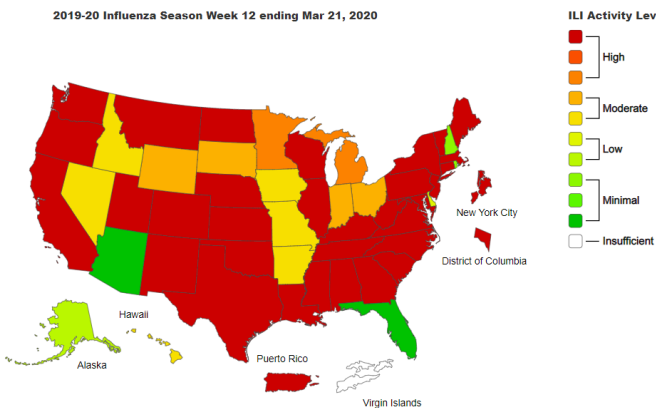
State Trends



- **For week 12** there were 1,405 influenza specimens tested by WHO/NREVSS collaborating Illinois laboratories and IDPH Laboratories; 107 specimens tested positive for Influenza: **7.6% positive**
- **Twenty-three (23) influenza-associated Intensive Care Unit (ICU)** admissions were reported in Illinois for this reporting week.
- For this reporting week, **three (3) influenza outbreaks** were reported in Illinois.

National Trends

The proportion of outpatient visits within Illinois for influenza-like illness (ILI) was 7.11% which is **ABOVE** the national region 5 baseline of 1.9%.



Resources

- Centers for Disease Control and Prevention Influenza Website: <http://www.cdc.gov/flu/>
- IDPH Seasonal Influenza Website: <http://www.dph.illinois.gov/topics-services/diseases-and-conditions/influenza/surveillance>