



2018-2019 Influenza Season Surveillance Report

Everyone 6 months and older should get a flu vaccine

Summary (Week 7: February 10, 2019 – February 16, 2019)

Current influenza activity is **WIDESPREAD** in the Peoria Region, with OSF Saint Francis Medical Center, UnityPoint Health Methodist|Proctor, Hopedale, and Pekin Hospital reporting 304 positive influenza tests.

The Illinois Department of Public Health reported state-wide flu activity as **WIDESPREAD ACTIVITY** (% of visits for ILI is at or above the national or region-specific baseline).

Peoria Region Trend

Week	Health Care Providers: SFMC, UP-M/P, HMC, Pekin					Comment
	Positive Tests	Number of Tests	Percentage Positive	Admission	ICU Admission	
Week 41	0	0	0%	0	0	No Subtype
Week 42	0	0	0%	0	0	No Subtype
Week 43	0	0	0%	0	0	No Subtype
Week 44	0	278	0%	0	0	No Subtype
Week 45	1	248	0.4%	0	0	Subtype A
Week 46	6	264	2.3%	2	1	Subtype A & B
Week 47	1	273	0.3%	0	0	Subtype A
Week 48	2	262	0.7%	0	0	Subtype A & B
Week 49*	8	338	2.4%	2	0	Subtype A & B
Week 50	10	336	3.0%	4	1	Subtype A & B
Week 51	34	397	8.6%	7	1	Subtype A & B
Week 52	37	419	8.8%	9	2	Subtype A & B
Week 1	48	467	10.3%	11	4	Subtype A & B
Week 2	38	479	7.9%	8	1	Subtype A & B
Week 3	46	423	10.9%	8	4	Subtype A & B
Week 4	107	478	22.4%	16	4	Subtype A & B
Week 5	198	635	31.2%	16	2	Subtype A & B
Week 6	203	673	30.2%	14	0	Subtype A & B
Week 7	304	881	34.5%	38	9	Subtype A & B
TOTAL	1043	7036	14.8%	135	29	

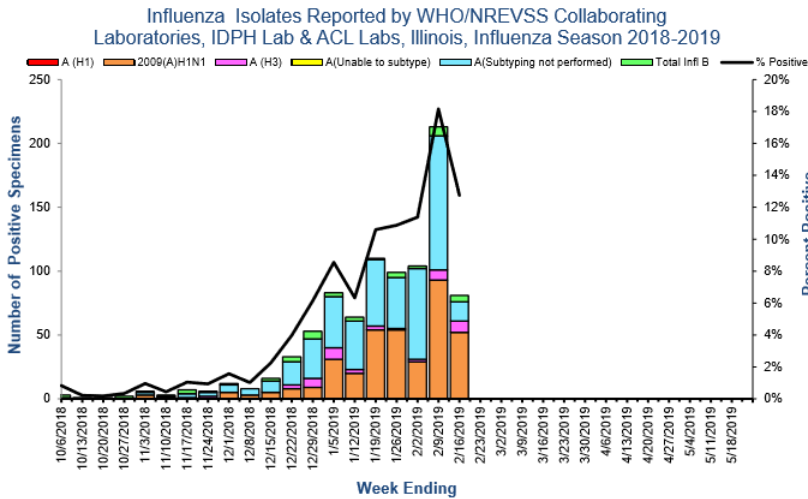
*Reporting from only specified sources (Week 49= No Hopedale Info)

Reporting to Peoria City County Health Department:

- 15 influenza cases requiring ICU hospitalization in the past 30 days

State and National Trends

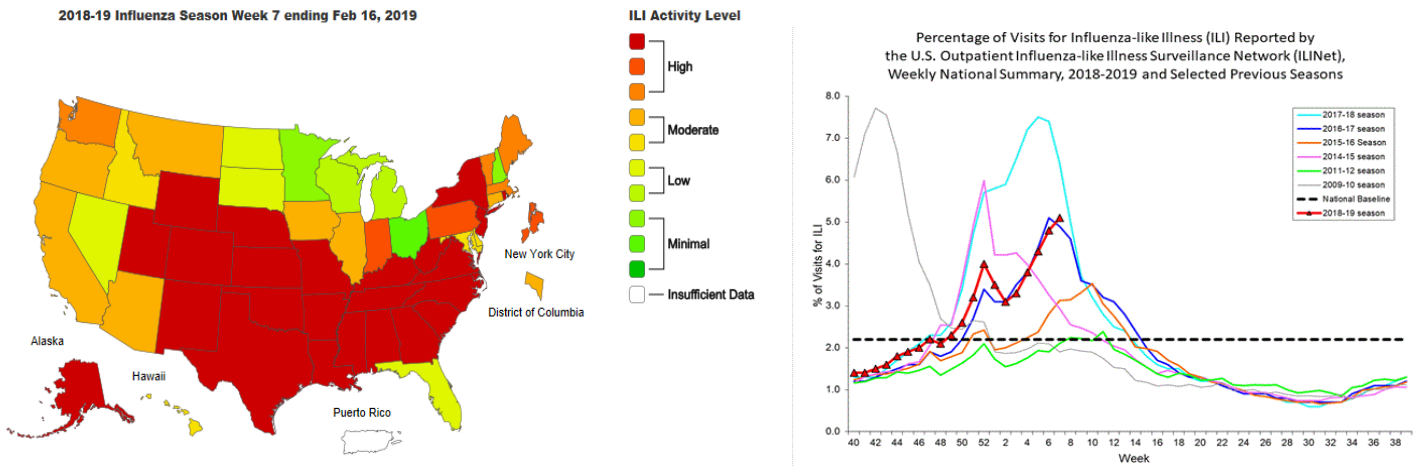
State Trends



- **For week 7** there were 635 influenza specimens tested by WHO/NREVSS collaborating Illinois laboratories and IDPH Laboratories; 81 specimens tested positive for Influenza: **12.8% positives**
- **FOURTY-FOUR (44) influenza-associated Intensive Care Unit (ICU) admissions** were reported in Illinois for this reporting week.
- For this reporting week, **FIVE (5) influenza outbreaks** were reported in Illinois.

National Trends

The proportion of outpatient visits within Illinois for influenza-like illness (ILI) was 2.76% which is **ELEVATED** compared to the national regional 5 baseline of 1.8%.



Resources

- Centers for Disease Control and Prevention Influenza Website: <http://www.cdc.gov/flu/>
- IDPH Seasonal Influenza Website: <http://www.dph.illinois.gov/topics-services/diseases-and-conditions/influenza/surveillance>