



2015-2016 Influenza Season Surveillance Report

Everyone 6 months and older should get a flu vaccine

Summary (Week 47: November 22, 2015 - November 28, 2015)

Current influenza activity is **LOW** in the Peoria Region, with OSF Saint Francis Medical Center and UnityPoint Health Methodist|Proctor reporting 1 positive influenza test.

The Illinois Department of Public Health reported state-wide flu activity as **SPORADIC** (confirmed influenza cases but no increase in influenza-like illnesses - ILI).

Peoria Region Trend

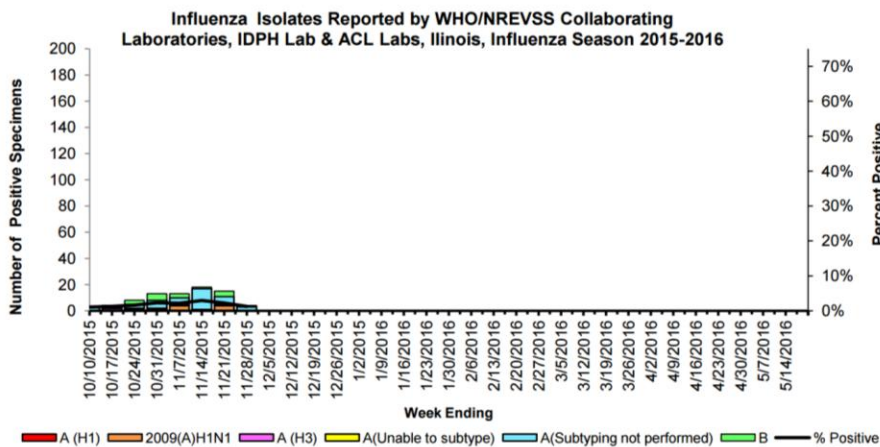
Week	Health Care Providers: SFMC, UP-M/P					Comment
	Positive Tests	Number of Tests	Percentage Positive	Admission	ICU Admission	
Week 44	0	43	0.0%	0	0	
Week 45	0	84	0.0%	0	0	
Week 46	0	104	0.0%	0	0	
Week 47	1	143	0.7%	0	0	

Reporting to Peoria City County Health Department

- 0 influenza w/ ICU hospitalization past 30 days

State and National Trends

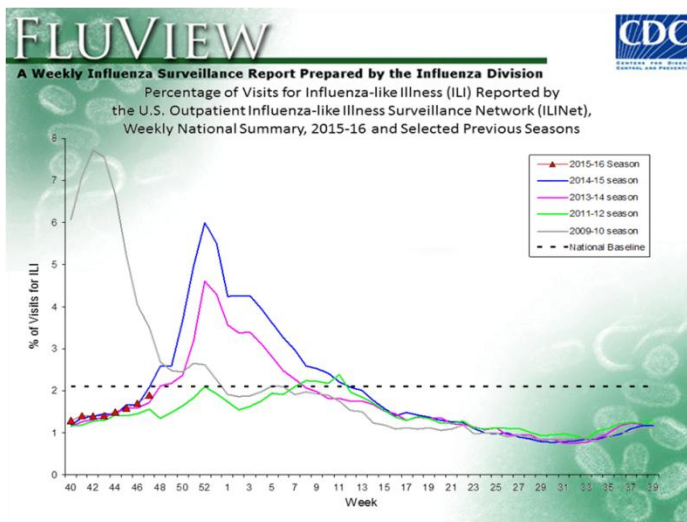
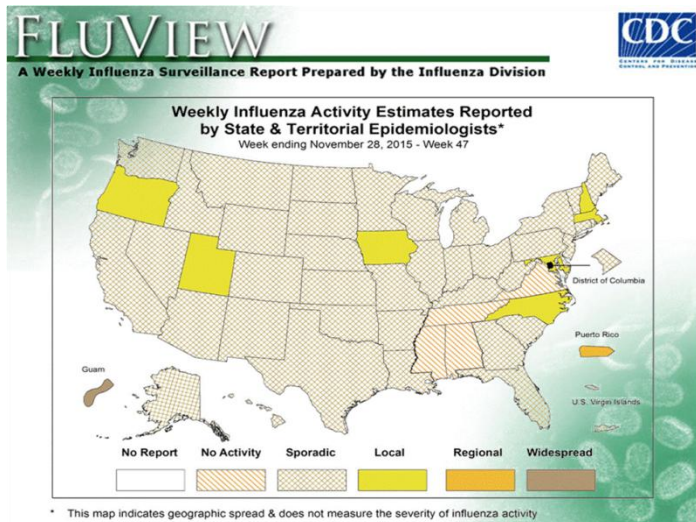
State Trends



- For this reporting week there were 321 influenza specimens tested by WHO/NREVSS collaborating Illinois laboratories and IDPH Laboratories; 4 specimens tested positive for Influenza: **1.2% positives**
- **Four (4) influenza-associated Intensive Care Unit (ICU) admissions** were reported in Illinois for this reporting week.
- For this reporting week, **zero influenza outbreaks** were reported in Illinois.

National Trends

- The proportion of outpatient visits within Illinois for influenza-like illness (ILI) was 1.15%, which is **below** the national regional 5 baseline.



Influenza Vaccine

All of the 2015-2016 influenza vaccine is made to protect against the following three viruses:

- an A/California/7/2009 (H1N1)pdm09-like virus
- an A/Switzerland/9715293/2013 (H3N2)-like virus
- a B/Phuket/3073/2013-like virus. (This is a B/Yamagata lineage virus)

Some of the 2015-2016 flu vaccine is quadrivalent vaccine and also protects against an additional B virus (B/Brisbane/60/2008-like virus). This is a B/Victoria lineage virus

Resources

- Centers for Disease Control and Prevention Influenza Website: <http://www.cdc.gov/flu/>
- IDPH Seasonal Influenza Website: <http://www.dph.illinois.gov/topics-services/diseases-and-conditions/influenza/surveillance>