



2016-2017 Influenza Season Surveillance Report

Everyone 6 months and older should get a flu vaccine

Summary (Week 05: January 29 - February 4, 2017)

Current influenza activity is **HIGH** in the Peoria Region, with OSF Saint Francis Medical Center, UnityPoint Health Methodist|Proctor, Hopedale Medical Complex, and Pekin Hospital reporting 69 positive influenza tests.

The Illinois Department of Public Health reported state-wide flu activity as **WIDESPREAD** (Outbreaks of influenza or increases in ILI cases and recent laboratory-confirmed influenza in at least half the regions of the state with recent laboratory evidence of influenza in the state).

Peoria Region Trend

Week	Health Care Providers: SFMC, UP-M/P					Comment
	Positive Tests	Number of Tests	Percentage Positive	Admission	ICU Admission	
Week 44*	10	134	7.5%	0	0	Mostly Subtype B
Week 45*	15	123	12.2%	0	0	Mostly Subtype B
Week 46*	13	152	8.6%	0	0	Mostly Subtype B
Week 47*	24	163	14.7%	1	0	Mostly Subtype B
Week 48	45	226	19.9%	4	0	Mostly Subtype B
Week 49	27	210	12.9%	5	1	Mostly Subtype B
Week 50	45	254	17.7%	3	0	Mostly Subtype B
Week 51	58	281	20.6%	7	0	Mostly Subtype B, increasing subtype A
Week 52	89	384	23.2%	15	5	Mostly Subtype B, increasing subtype A
Week 01	60	381	15.7%	9	1	Mostly Subtype B, increasing subtype A
Week 02	56	302	18.5%	8	1	Mostly Subtype B, increasing subtype A
Week 03	81	354	22.9%	17	3	Majority Subtype A
Week 04	57	304	18.8%	13	1	Majority Subtype A
Week 05	69	342	20.2%	16	7	Majority Subtype A
TOTAL	649	3610	18.0%	98	19	

*Reporting from only OSF St. Francis Medical Center and Unity Point Methodist|Proctor.

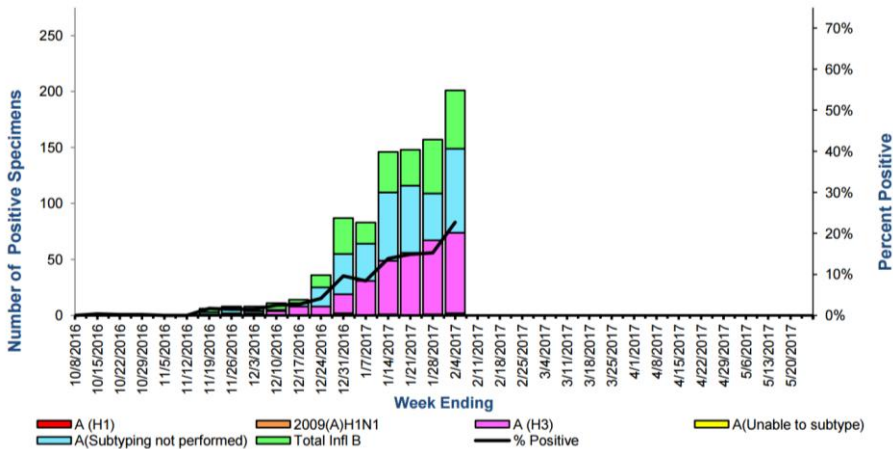
Reporting to Peoria City County Health Department:

- Less than 5 influenza w/ ICU hospitalization past 30 days

State and National Trends

State Trends

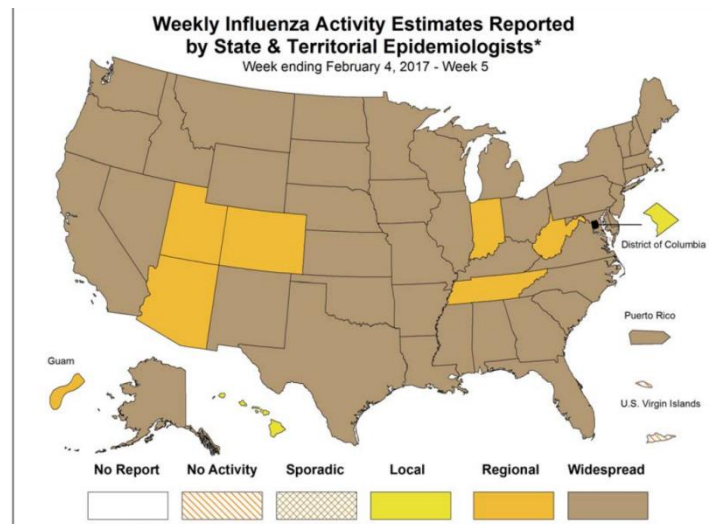
Influenza Isolates Reported by WHO/NREVSS Collaborating Laboratories, IDPH Lab & ACL Labs, Illinois, Influenza Season 2016-2017



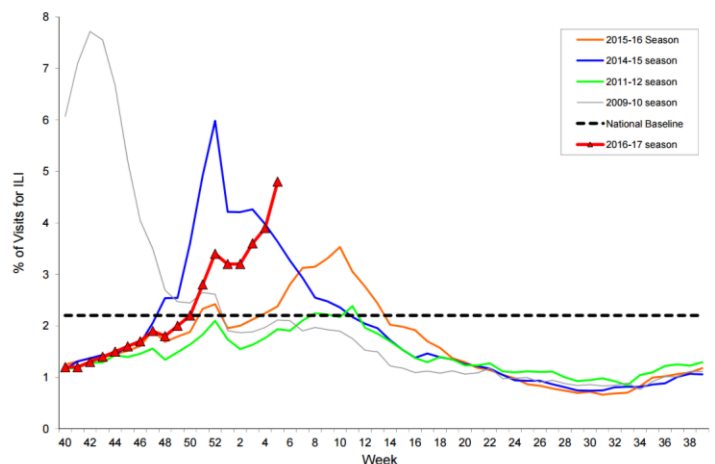
- For this reporting week there were 885 influenza specimens tested by WHO/NREVSS collaborating Illinois laboratories and IDPH Laboratories; 201 specimens tested positive for Influenza: **23% positives**
- **Forty-three (43) influenza-associated Intensive Care Unit (ICU) admissions** were reported in Illinois for this reporting week.
- For this reporting week, **six (6) influenza outbreak** were reported in Illinois.

National Trends

The proportion of outpatient visits within Illinois for influenza-like illness (ILI) was 3.17% which is **ABOVE** the national regional 5 baseline.



Percentage of Visits for Influenza-like Illness (ILI) Reported by the U.S. Outpatient Influenza-like Illness Surveillance Network (ILINet), Weekly National Summary, 2016-2017 and Selected Previous Seasons



Resources

- Centers for Disease Control and Prevention Influenza Website: <http://www.cdc.gov/flu/>
- IDPH Seasonal Influenza Website: <http://www.dph.illinois.gov/topics-services/diseases-and-conditions/influenza/surveillance>



Public Health
Prevent. Promote. Protect.

Peoria City/County
Health Department
www.pcchd.org

2016-2017: INFLUENZA WEEKLY SURVEILLANCE

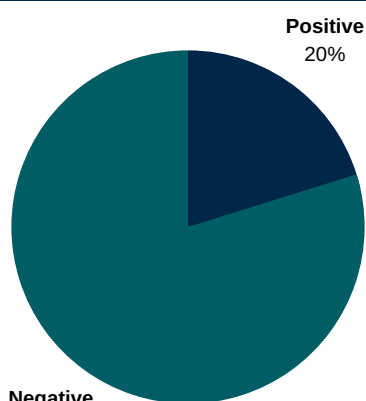
WEEK 05: JAN 29-FEB 4, 2017



HIGH

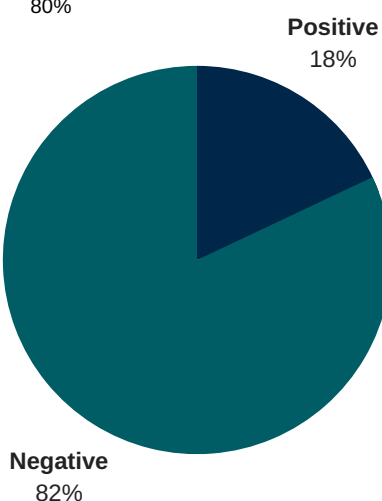
Influenza activity in Peoria - Tazewell Region

PERCENT POSITIVE TESTING



WEEK 5

Total of 342 tests; 69 positive tests
Majority positives were Subtype A



YEAR TO DATE Reporting began Week 44

Total of 3610 tests; 649 positive tests
30% Subtype A, 70% Subtype B

INFLUENZA ACTIVITY



EVERYONE 6 MONTHS AND OLDER SHOULD GET A FLU VACCINE



FLU SYMPTOMS

- Fever
- Cough, sore throat, runny nose
- Headache
- Muscle Aches
- Fatigue

